



START EXPLORING

**2K
21** COLLECTION



CRESSI HYDROSPORTS - 2021 COLLECTION 06

HOW TO USE THE CATALOG 08

FIND YOUR ISUP 09

ISUP 10

Element - All Round ISUP 10

Travelight - Foldable 9'2" ISUP Set 14

Reef - Window 10'2" ISUP Set 18

Fluid - All Round 10'2" ISUP Set 22

Tiger Shark - Multitask 10'2" ISUP Set 26

Fury - Touring 12'2" ISUP Set 30

Solid - Rental ISUP 34

ISUP COMPARISON TABLE 38

PADDLES 41

ACCESSORIES 47

Skeg Fins 48

Leashes 51

Pumps 52

BAGS AND BACKPACKS 52

Transport Backpacks 54

Spidy - SUP Dry Deckpack 55

SPARE PARTS 57

BRAND SUPPORT 60

CRESSI HYDROSPORTS 2021 COLLECTION

Hydrosports is the result of Cressi's experience, consisting of tradition, innovation and quality, since 1946.

Today, with this new line of products, Cressi seeks to bring its passion above the surface of the sea too.

With its close relationship to this environment, the Cressi team has been able to develop this new collection in response to the direct needs it encountered in practice and through water tests on its products:

Can you go on holiday with a small, light SUP?

Is it possible to combine a session at sea with a passion for freediving or fishing?

Wouldn't it be nice to admire the sea bed from the SUP?

Is it possible to achieve high performance on an inflatable SUP?

Cressi Hydrosport aims to answer these and other questions with this catalog: a guide designed to help you choose the best equipment for your needs.

Start exploring with Cressi Hydrosports.

FOLLOW US:

📱 cressi_hydrosports
🌐 cressihydrosports.com

CRESSI
HYDROSPORTS

Need support?

Cressi products are supported by a worldwide branches network, they can provides support and warranty to customers. Visit cressi.com and ask for the closest branch to you.

Cressi Italy Headquarters

Cressi Sub S.P.A.
Cressi Sub S.P.A.
Via G. Adamoli, 501
16165 Genova - Italy
Tel. +39 010 830 791

Cressi España

Cressi-Sub España S.A.
NIF: A60130978
C/Castellassa, 24 Nave 3,
Poligono Can Petit
08227 Terrassa Barcelona - Spain
Tel. +34 937 841 888

Cressi France

Cressi Sub France
Espace La Gaude,
9565 Route De Saint Laurent
06610 La Gaude - France
Tel. +33 049 329 0318

Cressi U.S.A.

Cressi Sub U.S.A.
3 Rosol Lane, Saddle Brook
NJ 07663 - USA
Phone: (800) 338 9143
Phone: (201) 594 1450

Cressi Mexico

Cressiwater S.A.P.I De C.V.
Central de Abastos, Carretera
Cancun-Aeropuerto km 17, Cancun
Quintana Roo. C.P.77565
Mexico, VAT NO.CRE161110812
Phone: +52 1 554 162-2052

Cressi Brasil

Cressi Brasil COM. MAT. ESP. LTDA
Avenida Padre Anchieta, 175 ,
Jordanópolis, São Bernardo do Campo
SP, 09891-420
CNPJ: 35.112.958/0001-59

Cressi South East Asia - Thailand

Cressi South East Asia Ltd
135/6-7 Moo 4
Patak Road, Tambon Rawai
Amphur Mueang, Phuket
Thailand 83130
Mobile: +66 (0) 643971234

Cressi China

Cressi China Watersports Products
Co.,Ltd
No.8 Nanhe Road, Kunshan City
Jiangsu province, China
Phone 86 0512 3668 0846#812



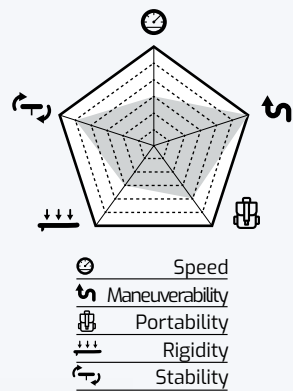
USE OF THE CATALOG COMPARISON GUIDE

The right page of each SUP is designed to be placed next to the right one of any other table in the catalog. This method allows a quick comparison and an immediate perception of the different dimensions and main features that distinguish and differentiate each SUP in the Cressi Hydrosports collection.



Comparison table
At the end of the ISUP section you can find the comparison table between all the tables in the catalog. On this double page you can have an overview of the entire Cressi Hydrosports ISUP collection.

Comparison chart
In this graph you can quickly see the strengths of each Cressi Hydrosports SUP.



Materials and compositions
This horizontal band is the comparison area between the various tables of the collection on the composition and the materials used.



Dimension
Thanks to this visualization, you can immediately see the size of the SUP, compared to a human figure of 180 cm in height.

THE SHAPES OF THE COLLECTION

The shapes of the SUP Cressi Hydrosports 2021 are designed to combine aesthetics and functionality:

All Round: easy to handle and stable, ideal for all levels of experience and sea conditions.

Touring: highly hydrodynamic, it is suitable for the more experienced and for long paddling sessions.

Fish: very stable and voluminous, it is suitable as a base for alternative activities.



	ALL ROUND	TOURING	FISH
Stability	++++	++	++++
Maneuverability	++++	++	+++
Hydrodynamics	+++	++++	+++

CROSSING MAP FIND YOUR SUP

This map is intended to help you understand which boards are best suited to your build and experience level.

Cross your characteristics to find the suggested tables in the meeting box.

	BEGINNER	INTERMEDIATE	EXPERIENCED
Weight: 40-50 kg 88-110 lbs	Travelight 9'2" Element 9'2" Element Small 8'2"	Travelight 9'2" Element 9'2" Element Small 8'2"	Travelight 9'2" Element 9'2" Element Small 8'2"
Weight: 50 - 60 kg 88-132 lbs	Fluid 10'2" Reef 12'2" Travelight 9'2" Element 9'2" Element 10'2"	Fluid 10'2" Reef 12'2" Travelight 9'2" Element 9'2" Element 10'2" Element Small 8'2"	Fluid 10'2" Reef 12'2" Travelight 9'2" Element 9'2" Element 10'2" Element Small 8'2"
Weight: 60 - 70 kg 132-154 lbs	Solid 10'6" Tiger Shark 10'2" Fluid 10'2" Reef 12'2" Travelight 9'2" Element 9'2" Element 10'2"	Solid 10'6" Tiger Shark 10'2" Fluid 10'2" Fury 12'2" Reef 12'2" Travelight 9'2" Element 9'2" Element 10'2"	Solid 10'6" Tiger Shark 10'2" Fluid 10'2" Fury 12'2" Reef 12'2" Travelight 9'2" Element 9'2" Element 10'2" Element Small 8'2"
Weight: 70 - 80 kg 154-176 lbs	Solid 10'6" Tiger Shark 10'2" Fluid 10'2" Reef 12'2" Element 10'2"	Solid 10'6" Tiger Shark 10'2" Fluid 10'2" Fury 12'2" Reef 12'2" Travelight 9'2" Element 9'2" Element 10'2"	Solid 10'6" Tiger Shark 10'2" Fluid 10'2" Fury 12'2" Reef 12'2" Travelight 9'2" Element 9'2" Element 10'2"
Weight: 80 - 90 kg 176-198 lbs	Solid 10'6" Tiger Shark 10'2" Fluid 10'2" Reef 12'2" Element 10'2"	Solid 10'6" Tiger Shark 10'2" Fluid 10'2" Fury 12'2" Reef 12'2" Travelight 9'2" Element 10'2"	Solid 10'6" Tiger Shark 10'2" Fluid 10'2" Fury 12'2" Reef 12'2" Travelight 9'2" Element 9'2" Element 10'2"
Weight: 90 - 100 kg 198-220 lbs	Solid 10'6" Tiger Shark 10'2" Fluid 10'2"	Solid 10'6" Tiger Shark 10'2" Fluid 10'2" Fury 12'2" Reef 12'2" Element 10'2"	Solid 10'6" Tiger Shark 10'2" Fluid 10'2" Fury 12'2" Reef 12'2" Travelight 9'2" Element 9'2" Element 10'2"
Weight: 100 kg >220 lbs	Solid 10'6" Tiger Shark 10'2" Fluid 10'2"	Solid 10'6" Tiger Shark 10'2" Fluid 10'2"	Solid 10'6" Tiger Shark 10'2" Fluid 10'2" Fury 12'2"
Tandem:		Solid 12'2"	Solid 12'2"

ELEMENT ALL ROUND ISUP SET

Minimalism and pure lines, combined with the quality of Cressi DWF technology, give rise to a classic, no-frills inflatable SUP for paddling purists.

The All Round shape, with rounded nose and flat tail, provides great maneuverability and stability.

The nose rocker (curved bow) improves buoyancy by preventing the tip of the board from plunging into choppy waters, making Element perfect for sea use.

The large diamond-patterned pad offers a spacious walkable area and optimal grip, even when barefoot in the water.

Element is a ready-to-use set, easy to inflate (in under 10 minutes), carry and store thanks to the practical backpack supplied: a space-saving solution equipped with all the accessories you need to go stand-up paddleboarding with peace of mind.

Available in different sizes, it's suitable for all levels of experience and build.

PURE PADDLING FOR ALL THE FAMILY



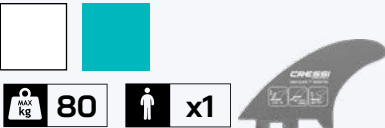
ELEMENT
ALL ROUND ISUP SET

Pure paddling for all the family



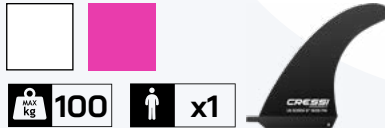
SMALL ALL ROUND 8'2"

Length	250 cm	8'2"
Width	71 cm	28"
Thickness	15 cm	6"
Volume	210 l	
Max press.	15 PSI	1 BAR
Inflation	5 minutes	
Max load	80 kg	176lbs
Board weight	7,5 kg (± 0,2)	16,5 lbs
Set weight	11 kg (± 0,2)	24 lbs
Technology	DWF	
N° Chambers	1	
Fin Box	Mini Quick Fin Box	
Fin	Mini Quick 7"	
Valve	HP Valve	



ALL ROUND 9'2"

Length	280 cm	9'2"
Width	76 cm	30"
Thickness	15 cm	6"
Volume	250 l	
Max press.	15 PSI	1 BAR
Inflation	6 minutes	
Max load	100 kg	220 lbs
Board weight	8 kg (± 0,2)	17,5 lbs
Set weight	12 kg (± 0,2)	26,5 lbs
Technology	DWF	
N° Chambers	1	
Fin Box	US Fin Box	
Fin	US 8"	
Valve	HP Valve	

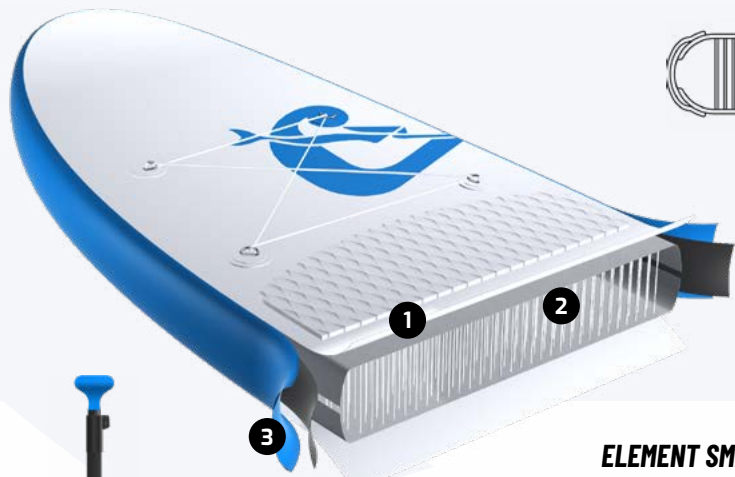
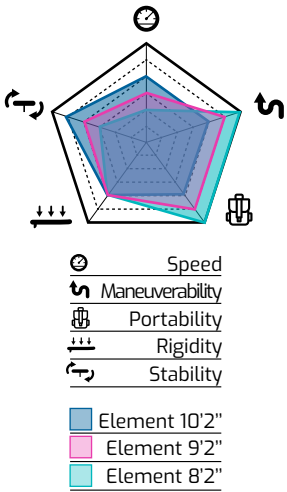


ALL ROUND 10'2"

Length	310 cm	10'2"
Width	81 cm	32"
Thickness	15 cm	6"
Volume	300 l	
Max press.	15 PSI	1 BAR
Inflation	8 minutes	
Max load	120 kg	264 lbs
Board weight	9 kg (± 0,2)	20 lbs
Set weight	13 kg (± 0,2)	28,5 lbs
Technology	DWF	
N° Chambers	1	
Fin Box	US Fin Box	
Fin	US 8"	
Valve	HP Valve	



ELEMENT



CRESSI
Double Wall Fabric

Element boards are made with Cressi DWF (Double Wall Fabric) technology, an airtight multilayer¹ material whose internal fibers² give it a perfectly flat and rigid surface once inflated. The double-layer rail³ with variable thickness guarantees excellent performance during use but is easy to roll up, for a board that's durable and easy to use.

ELEMENT SMALL 8'2"
The set includes:

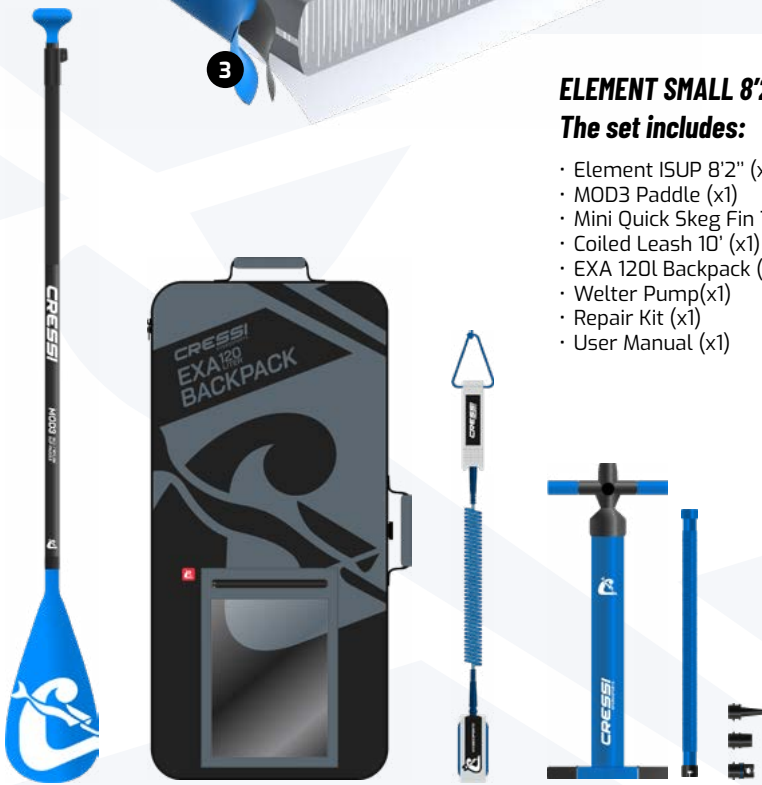
- Element ISUP 8'2" (x1)
- MOD3 Paddle (x1)
- Mini Quick Skeg Fin 7" (x1)
- Coiled Leash 10' (x1)
- EXA 120L Backpack (x1)
- Welter Pump(x1)
- Repair Kit (x1)
- User Manual (x1)

ELEMENT 9'2"
The set includes:

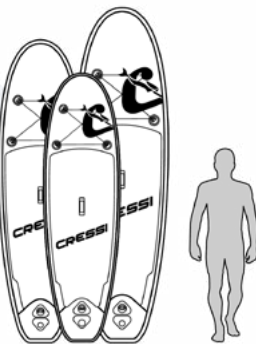
- Element ISUP 9'2" (x1)
- MOD3 Paddle (x1)
- US Skeg Fin 8" (x1)
- Coiled Leash 10' (x1)
- EXA 120L Backpack (x1)
- Welter Pump(x1)
- Repair Kit (x1)
- User Manual (x1)

ELEMENT 10'2"
The set includes:

- Element ISUP 10'2" (x1)
- MOD3 Paddle (x1)
- US Skeg Fin 8" (x1)
- Coiled Leash 10' (x1)
- EXA 120L Backpack (x1)
- Welter Pump(x1)
- Repair Kit (x1)
- User Manual (x1)



PRODUCT	CODE
ELEMENT SMALL ALL ROUND ISUP SET WHITE/AQUAMARINE 8'2"	NA000832
ELEMENT ALL ROUND ISUP SET WHITE/PINK 9'2"	NA000934
ELEMENT ALL ROUND ISUP SET WHITE/BLUE 10'2"	NA001032



TRAVELIGHT FOLDABLE 9'2" ISUP SET

Easy to transport, light and compact: Travelight is the Cressi Hydrosports SUP that's ideal for travelers.

The innovative design of the SUP enables it to be folded longitudinally then rolled up, thereby occupying half the space of an inflatable SUP of the same size.

Travelight is made with Cressi LWF technology, our lightest and strongest construction in the Inflatable category, which minimizes its weight without affecting performance.

The All Round shape makes the board highly versatile and manageable for different levels of experience and build.

The set is complemented by similarly compact accessories designed ad hoc, including the small Feather pump and the MOD5 modular paddle, which lets you transport the entire set in the TERA backpack, only 50 cm tall.



LIGHTEST AND MOST TRAVEL FOCUSED SUP



TRAVELIGHT FOLDABLE 9'2" ISUP SET

Our lightest and most travel focused SUP

The board that combines stiffness and lightness, performance and high portability. All in a small 50 cm backpack, ideal for travelers.

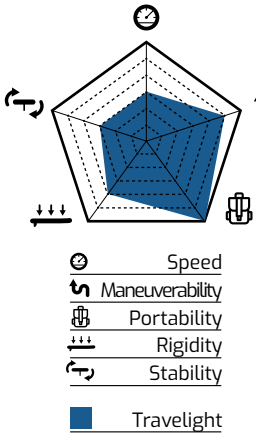
Length	280 cm	9'2"
Width	81 cm	32"
Thickness	15 cm	6"
Volume	280 l	
Max press.	15 PSI	1 BAR
Inflation	13 minutes	
Max load	110 kg	242 lbs
Board weight	8 kg (± 0,2)	17,5 lbs
Set weight	11 kg (± 0,2)	24 lbs
Technology	LWF	
N° Chambers	1	
Fin Box	Mini Quick Fin Box(x2)	
Fin	Mini Quick 7" (x2)	
Valve	HP Valve	

110

x1



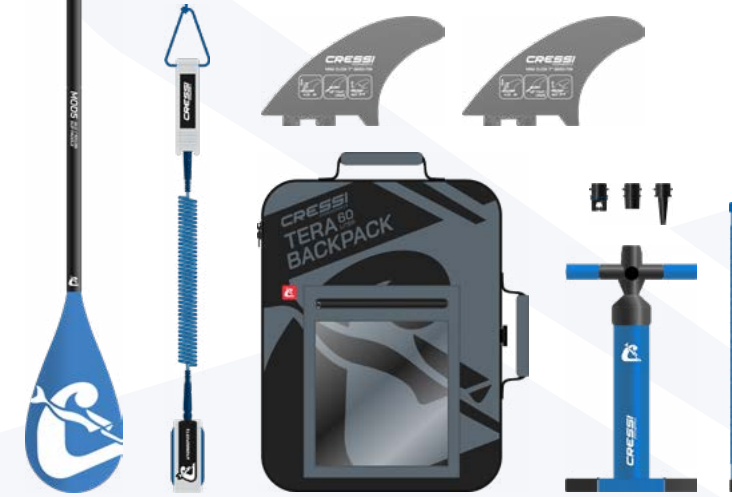
TRAVELIGHT 9'2"



CRESSI HYDROSPORTS Lightweight Wall Fabric

Innovative flat-weave core¹ that minimizes the thickness of the upper and lower layer for an extremely low weight and high flexibility, allowing longitudinal folding and rolling once deflated.

It's surrounded by a sturdy multilayer rail² designed to compensate for the board bending and guarantee excellent performance during use.

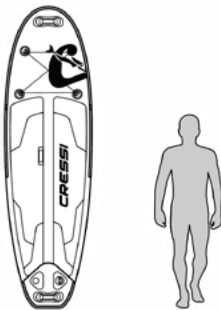


The set includes:

- Travelight ISUP 9'2" (x1)
- MOD5 Paddle (x1)
- Mini Quick Skag Fin 7" (x2)
- Coiled Leash 10' (x1)
- TERA 60L Backpack (x1)
- Feather Pump (x1)
- Repair Kit (x1)
- User Manual (x1)

PRODUCT
TRAVELIGHT FOLDABLE ISUP SET WHITE/BLUE 9'2"

CODE
NA010980



A LARGER WINDOW TO LOOK BEYOND

REEF WINDOW 10'2" ISUP SET

The full snorkeling experience from above the surface: a new perspective for encountering and observing the underwater environment with maximum respect. This is Reef, the new Cressi Window ISUP with the biggest window yet.

The large 34" 'fish' shape coupled with the pre-laminated material have enabled us to design an elongated window that extends from the paddling position to the bow, and thanks to the sturdy layer of Crystal Clear PVC, Reef's window offers an exceptional view of the seabed during your outing.

The high buoyancy, curved bow and generous 9" drift give the board great stability, to let you comfortably admire the sea wherever you go.

REEF
WINDOW 10'2" ISUP SET

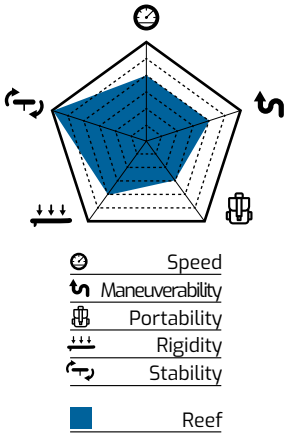
A largest window to look beyond

The ideal SUP to explore the sea from every angle: from the underwater ecosystem to the views above the surface.

Length	310 cm	10'2"
Width	86 cm	34'
Thickness	15 cm	6"
Volume	290 l	
Max press.	15 PSI	1 BAR
Inflation	7 minutes	
Max load	110 kg	242 lbs
Board weight	10 kg (± 0,2)	22 lbs
Set weight	14 kg (± 0,2)	31 lbs
Technology	WPLF	
N° Chambers	1	
Fin Box	US Fin Box	
Fin	US 9"	
Valve	HP Valve	



REEF 10'2"



CRESSI
Window PLF

The largest window in the ISUP category, designed thanks to Cressi's experience in developing boards with openings. Made with a solid, thick layer of transparent PVC¹ with perimeter reinforcement, it's sized to eliminate

deformations and structural deficits. Moreover, thanks to the pre-laminated² material without gluing and the double-layer rail³, Reef offers the maximum viewing area and comfort while paddling.



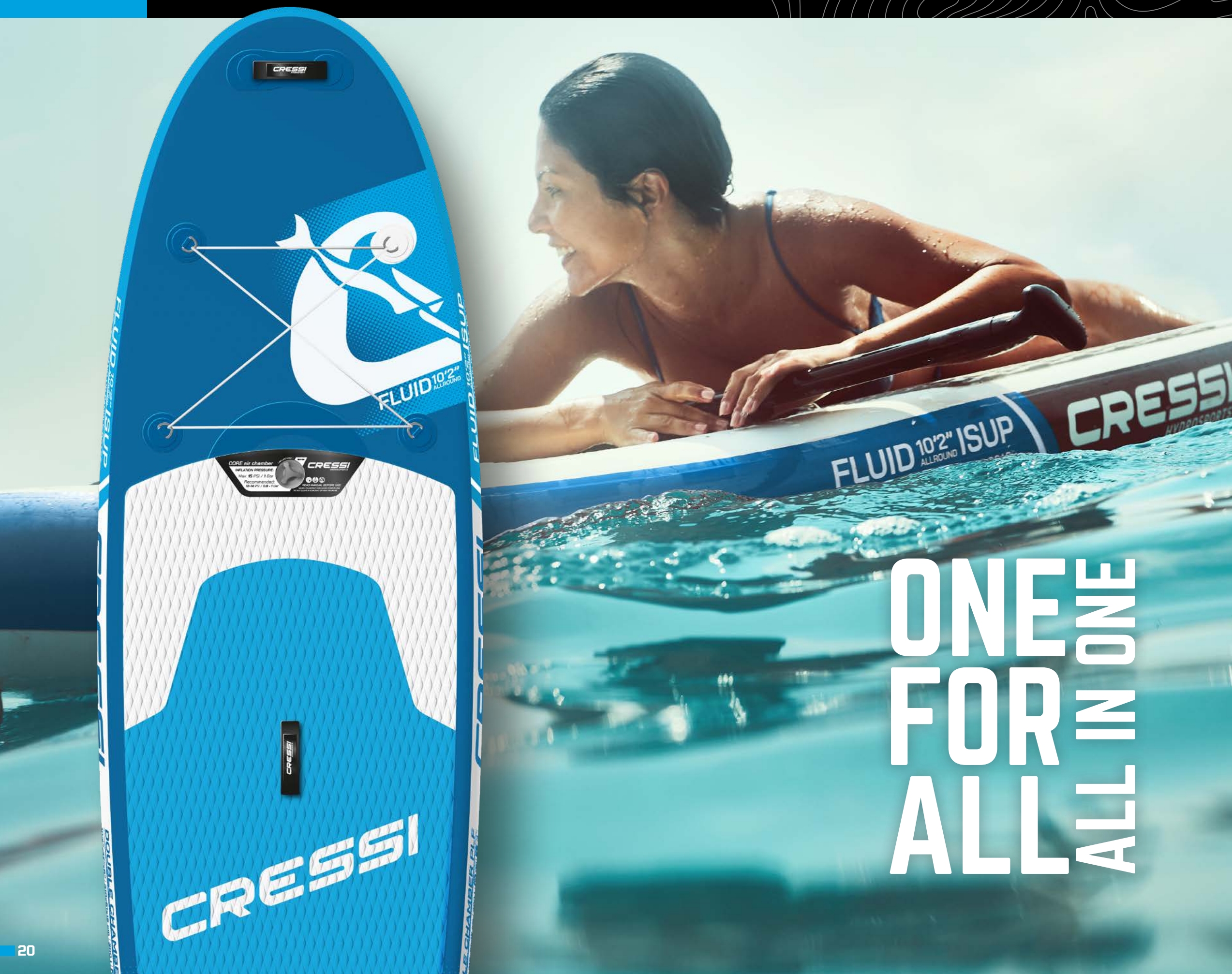
The set includes:

- Reef ISUP 10'2" (x1)
- MOD3 Paddle (x1)
- US Skeg Fin 9" (x1)
- Coiled Leash 10' (x1)
- EXA 120L Backpack (x1)
- Welter Pump (x1)
- Repair Kit (x1)
- User Manual (x1)



PRODUCT
REEF WINDOW WISUP SET BLUE 10'2"

CODE
NA031020



FLUID ALL ROUND 10'2" ISUP SET

Our most versatile, safe and performing board in all aquatic conditions and activities, suitable for learners as well as the most experienced, ideal for sea excursions in calm or choppy waters, through to yoga and fitness.

Thanks to Cressi Double Chamber PLF technology, this inflatable board also combines exceptional structural rigidity with the safety of a second integrated air chamber.

Stable and maneuverable thanks to its generous thickness (15 cm) and wide width (81 cm), Fluid is the ideal SUP to ensure maximum fun at all times.

Equipped with an 8" fin to increase maneuverability, the classic All Round shape with a rounded and curved bow transmits a linear and gentle feeling of paddling.

The diamond-patterned pad always ensures a firm grip, even with bare feet in wet conditions.

Fluid is a set complete with all the accessories you need to practice, and thanks to the supplied pump it inflates in under 10 minutes.

ONE
FOR
ALL

ONE
IN
ALL

FLUID ALL ROUND 10'2" ISUP SET

One for all. All in one

Created from the search for the perfect balance between versatility and safety, Fluid embodies the best of technology: Cressi Double Chamber PLF.

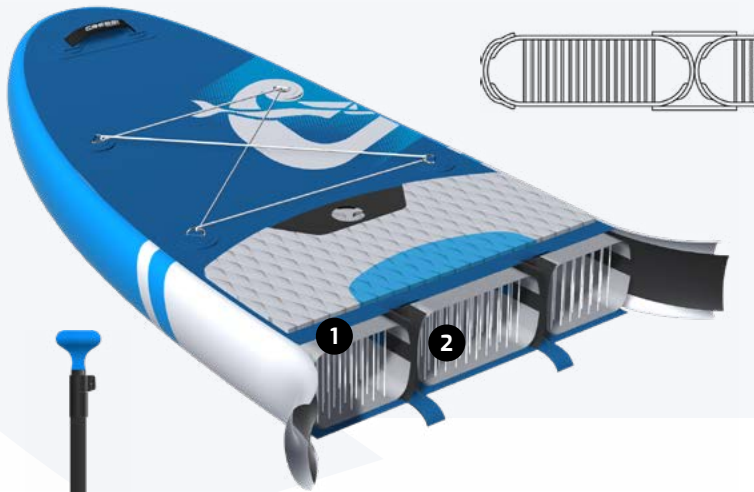
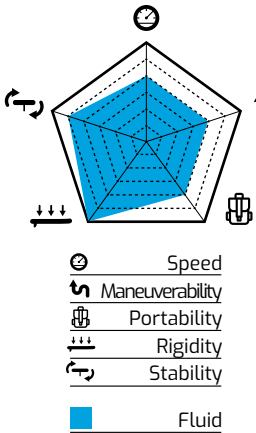
Length	310 cm	10'2"
Width	81 cm	32"
Thickness	15 cm	6"
Volume	300 l	
Max press.	15 PSI	1 BAR
Inflation	8 minutes	
Max load	120 kg	264 lbs
Board weight	10 kg (± 0,2)	22 lbs
Set weight	14 kg (± 0,2)	31 lbs
Technology	DC PLF	
N° Chambers	2	
Fin Box	US Fin Box	
Fin	US 8"	
Valve	HP Valve (X2)	

120

x1



FLUID 10'2"



CRESSI Double Chamber PLF

Double air chamber core made of pre-laminated¹ composite material without gluing, for a board with exceptional performance in terms of stiffness/weight ratio and stability. The central chamber² with

dedicated valve ensures improved performance plus greater safety during use in the event of air leaks caused by accidental punctures.

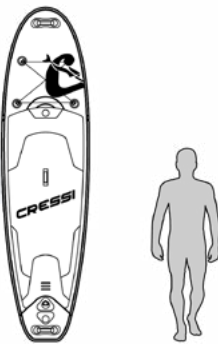


The set includes:

- Fluid ISUP 10'2" (x1)
- MOD3 Paddle(x1)
- US Skeg Fin 8" (x1)
- Coiled Leash 10' (x1)
- EXA 120L Backpack (x1)
- Welter Pump (x1)
- Repair Kit (x1)
- User Manual (x1)

PRODUCT
FLUID ALL ROUND DC ISUP SET BLUE 10'2"

CODE
NA021020



TIGER SHARK MULTITASK 10'2" ISUP SET

Can the pleasure of stand-up paddleboarding be combined with a passion for spearfishing and freediving?

Tiger Shark was born from this question and is designed to offer new possibilities for enjoying these activities.

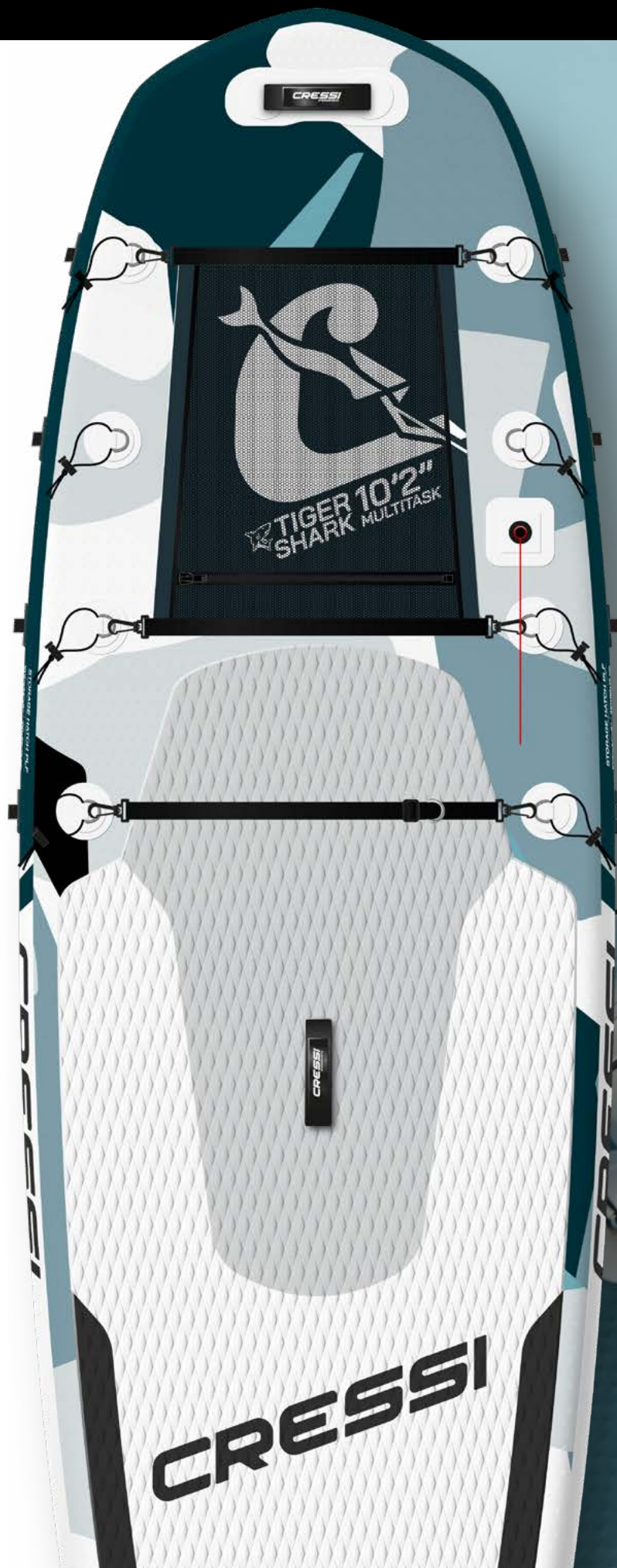
The large and spacious 'fish' shape is ideal for providing stability onboard when preparing and setting up the equipment.

Thanks to Cressi Storage Hatch PLF technology, this board makes it easy to transport equipment, with a large and practical locker in the bow equipped with a cover mesh pocket for storing items like ropes, fins or the catch itself.

The supplied adjustable strap with D-Ring can be passed under the board to connect the ascent line during diving and stored while paddling, so as not to affect hydrodynamic performance.

The bow is equipped with a base and shaft with a diving flag, while the D-Rings are equipped with adjustable elastic bands to attach spearguns and rods to the side hooks, so as not to take up space onboard and always offer a view of the equipment.

The practical bungee elastic cords are positioned at the stern to provide an additional cargo area.



MOST VERSATILE AND EQUIPPED SUP



TIGER SHARK MULTITASK 10'2" ISUP SET

Most versatile and equipped SUP

Tiger Shark opens up new possibilities for sea activities like fishing or freediving.

The special locker, the accessories, and different hooks and attachments offer a versatile and practical platform.

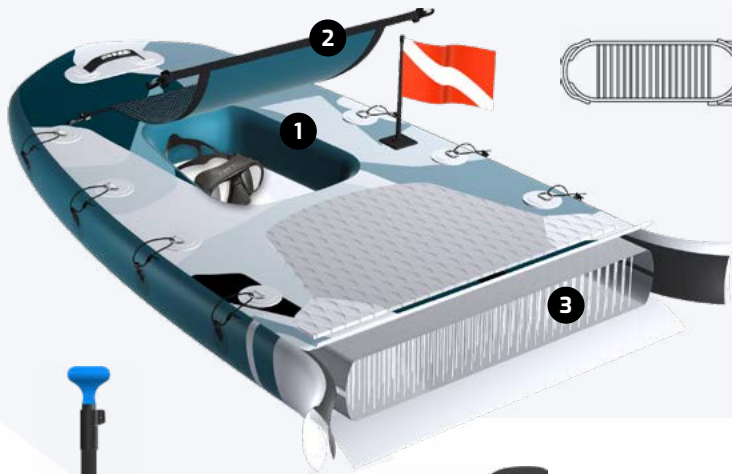
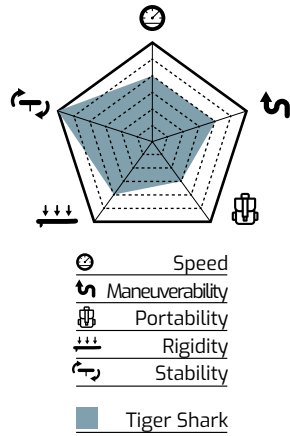
Length	310 cm	10'2"
Width	86 cm	34'
Thickness	15 cm	6"
Volume	320 l	
Max press.	15 PSI	1 BAR
Inflation	8 minutes	
Max load	130 kg	286 lbs
Board weight	10 kg (± 0,2)	22 lbs
Set weight	14 kg (± 0,2)	31 lbs
Technology	SH PLF	
N° Chambers	1	
Fin Box	US Fin Box	
Fin	US 9"	
Valve	HP Valve	

130

x1



TIGER SHARK 10'2"



CRESSI Storage Hatch PLF

The first ISUP with integrated locker¹ for stowing equipment and light gear, with a sturdy marine PVC bottom with high tensile strength and cover with mesh pocket². Pre-laminated material core³ without gluing and

double-layer rail, for a sturdy but low-weight board offering excellent paddling performance and stability when preparing for activities onboard.



The set includes:

- Tigershark ISUP 10'2" (x1)
- MOD3 Paddle (x1)
- US Skeg Fin 9" (x1)
- Coiled Leash 10' (x1)
- EXA 120L Backpack (x1)
- Welter Pump (x1)
- Dive down Flag (x1)
- Repair Kit (x1)
- User Manual (x1)

PRODUCT
TIGER SHARK MULTITASK ISUP SET AQUAMARINE CAMO 10'2"

CODE
NA041025



FURY TOURING 12'2" ISUP SET

Fury is the ISUP from Cressi Hydrosports dedicated to touring. The hydrodynamic and elongated shape, coupled with the very light Carbon paddle supplied, make this set the best one for lengthy paddleboarding sessions.

The curved bow (nose rocker) improves its buoyancy in the sea, preventing the tip from sinking into the ripples of the waves, while creating hydrodynamic resistance.

The Cressi Double Chamber PLF technology maintains a highly performing structural rigidity while paddling, despite the board's length of over 12 feet, and the double air chamber guarantees greater safety in case of accidental punctures.

The large 9" drift positioned far from the center of gravity helps maintain a linear trajectory even at low speeds, providing an advantage over long distances.



FASTEST AND BEST PERFORMING SUP

+ CARBON PADDLE

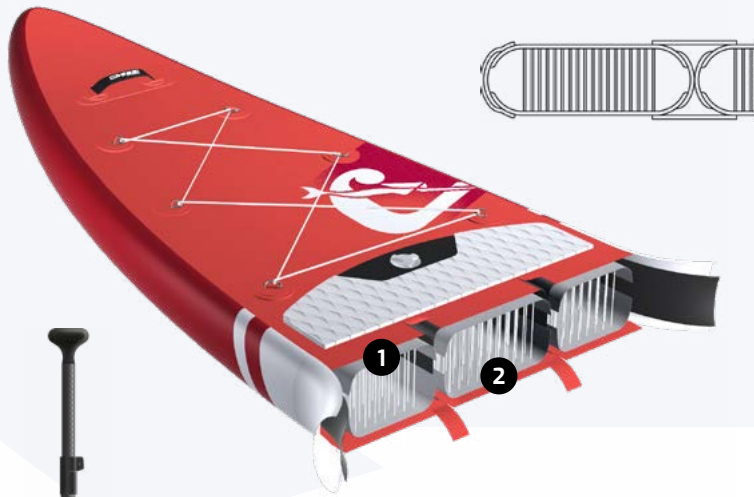
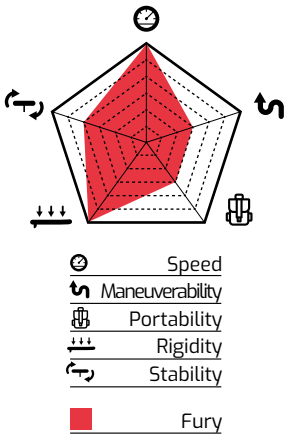


FURY
TOURING 12'2" ISUP SET
+ CARBON PADDLE

Fastest and best performing SUP

Fury is designed for long sea excursions, thanks to the high performance of its hydrodynamic shape and ultra-light Carbon paddle.

Length	371 cm	12'2"
Width	76 cm	30"
Thickness	15 cm	6"
Volume	300 l	
Max press.	15 PSI	1 BAR
Inflation	8 minutes	
Max load	120 kg	264 lbs
Board weight	10,5 kg (± 0,2)	23 lbs
Set weight	14,5 kg (± 0,2)	32 lbs
Technology	DC PLF	
N° Chambers	2	
Fin Box	US Fin Box	
Fin	US 9"	
Valve	HP Valve (X2)	



CRESSI
HYDROSPORTS
Double Chamber PLF

Double air chamber core made of pre-laminated¹ composite material without gluing, for a board with exceptional performance in terms of stiffness/weight ratio and stability. The central chamber² with

dedicated valve ensures improved performance plus greater safety during use in the event of air leaks caused by accidental punctures.



The set includes:

- Fury ISUP 12'2" (x1)
- Carbon Paddle (x1)
- US 5Keg Fin 9" (x1)
- Coiled Leash 10' (x1)
- EXA 120L Backpack (x1)
- Welter Pump (x1)
- Repair Kit (x1)
- User Manual (x1)

PRODUCT

SET ISUP FURY TOURING DC ROSSO 12'2"

CODE

NA051280





THE FIRST SUP SPECIFICALLY CONCEIVED FOR WATER SPORTS CENTERS AND RENTAL ACTIVITY

SOLID RENTAL ISUP

Solid is the Cressi Hydrosports SUP family designed specifically for professional rental.

The use of Double Chamber Reinforced PLF technology and triple-layer anti-abrasion rail (the most resistant and robust composition in the whole collection) guarantee maximum structural rigidity and great safety during sessions at sea.

The board is available in the All Round version with one seat and Tandem with two seats.

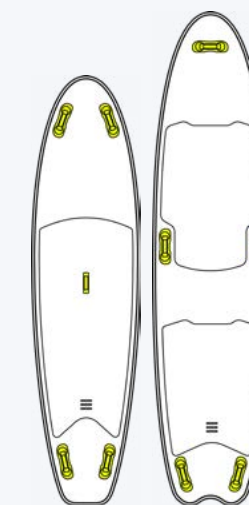
Due to their intended professional use, the two versions of Solid have features designed to improve the experience of both the boards' end users and those who rent them.

Numerous D-rings and handles are positioned along Solid's structure to facilitate hooking and transport.

Furthermore, each side features special dedicated HIN (Hull Identification Number) spaces for customized numbering by the rental center.

The US Click 9" fins supplied have a quick coupling and release system, with a variable-intensity locking system.

Each board will be accompanied by a Trailer Leash, a reinforced elastic rope with double S-shape carabiner, useful for towing and mooring.



Solid has 5 practical handles to facilitate transport and storage

SOLID RENTAL ISUP

The first SUP specifically conceived for Water Sports Centers and Rental activity

Solid is born to meet the need for a very resistant, rigid and safe inflatable board. These SUP are designed specifically for Watersports Centers and for professional rental, with the stronger technology in the collection.



US Quick Skag Fin 9" with fast lock and unlock system.

ALL ROUND 10'6"

Length	323 cm	10'6"
Width	81 cm	32'
Thickness	15 cm	6"
Volume	310 l	
Max press.	15 PSI	1 BAR
Inflation	8 minutes	
Max load	125 kg	275 lbs
Board weight	10,5 kg (± 0,2)	23 lbs
Set weight	11,5 kg (± 0,2)	25 lbs
Technology	DC PLF	
N° Chambers	2	
Fin Box	US Fin Box	
Fin	US Quick 9"	
Valve	HP Valve (X2)	

125

x1

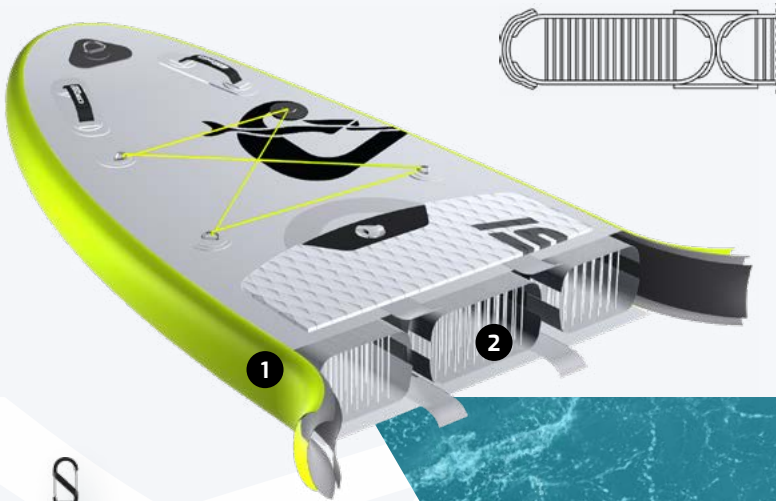
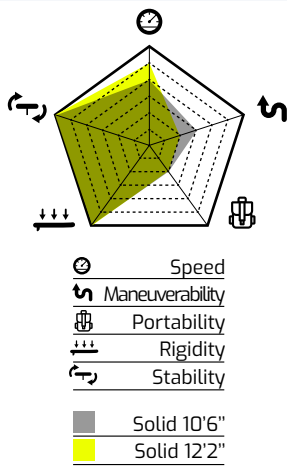
TANDEM 12'2"

Length	371 cm	12'2"
Width	86 cm	34'
Thickness	15 cm	6"
Volume	400 l	
Max press.	15 PSI	1 BAR
Inflation	10 minutes	
Max load	160 kg	352 lbs
Board weight	13 kg (± 0,2)	28 lbs
Set weight	14,5 kg (± 0,2)	32 lbs
Technology	DC PLF	
N° Chambers	2	
Fin Box	US Fin Box (x2)	
Fin	US Quick 9" (x2)	
Valve	HP Valve (x2)	

160

x2

SOLID



CRESSI Double Chamber PLF reinforced

Triple-layer reinforced rail¹ with external anti-abrasion coating, for longer-lasting boards when subjected to greater stresses from prolonged use during rental.

The double air chamber core² made of pre-laminated material with a dedicated valve gives the user high rigidity and safety in case of air leaks caused by accidental punctures.

HIN space for customized numbering by the rental center

Thanks to the Trailer Leash supplied, it will be possible to easily and quickly connect the boards through the D-Rings positioned at the bow and stern, so as to be able to keep all the boards under control during numerous outings.



SOLID 10'6"

The set includes:

- Solid ISUP 10'6" (x1)
- US Quick Skag Fin 9" (x1)
- Trailer Leash 8' (x1)

SOLID 12'2"

The set includes:

- Solid ISUP 12'2" (x1)
- US Quick Skag Fin 9" (x2)
- Trailer Leash 8' (x1)

PRODUCT	CODE
SOLID ALL ROUND DC ISUP GREY/FLUO 10'6"	NB011070
SOLID TANDEM DC ISUP GREY/FLUO 12'2"	NB001270



ISUP BOARDS
COMPARISON TABLE



Board	ELEMENT SMALL 8'2"		ELEMENT 9'2"		ELEMENT 10'2"		TRAVELIGHT 9'2"		REEF 10'2"		Board	FLUID 10'2"		TIGER SHARK 10'2"		FURY 12'2"		SOLID 10'6"		SOLID 12'2"	
Code	NA000832		NA000934		NA001032		NA010980		NA031020		Code	NA021020		NA041025		NA051280		NB011070		NB001270	
RRP	479,99 €		489,99 €		499,99 €		499,99 €		599,99 €		RRP	599,99 €		849,99 €		999,99 €		499,99 €		599,99 €	
Category	All Round ISUP		All Round ISUP		All Round ISUP		Foldable ISUP		Window ISUP		Category	All Round ISUP		Multitask ISUP		Touring ISUP		All Round ISUP		Tandem ISUP	
Length	250 cm	8'2"	280 cm	9'2"	310 cm	10'2"	280 cm	9'2"	310 cm	10'2"	Length	310 cm	10'2"	310 cm	10'2"	371 cm	12'2"	323 cm	10'6"	371 cm	12'2"
Width	71 cm	28"	76 cm	30"	8 cm	32"	81 cm	32"	86 cm	34"	Width	81 cm	32"	86 cm	34"	76 cm	30"	81 cm	32"	86 cm	34"
Thickness	15 cm	6"	15 cm	6"	15 cm	6"	15 cm	6"	15 cm	6"	Thickness	15 cm	6"	15 cm	6"	15 cm	6"	15 cm	6"	15 cm	6"
Volume	210 l		250 l		30 l		280 l		290 l		Volume	300 l		320 l		300 l		310 l		400 l	
Max press.	15 PSI	1 BAR	15 PSI	1 BAR	15 PSI	1 BAR	15 PSI	1 BAR	15 PSI	1 BAR	Max press.	15 PSI	1 BAR	15 PSI	1 BAR	15 PSI	1 BAR	15 PSI	1 BAR	15 PSI	1 BAR
Inflation	5 minutes		6 minutes		8 minutes		13 minutes		7 minutes		Inflation	8 minutes		8 minutes		8 minutes		8 minutes		10 minutes	
Max load	80 kg	176 lbs	100 kg	220 lbs	120 kg	264 lbs	110 kg	242 lbs	110 kg	242 lbs	Max load	120 kg	264 lbs	130 kg	286 lbs	120 kg	264 lbs	125 kg	275 lbs	160 kg	352 lbs
Board weight	7.5 kg (± 0,2)	16,5 lbs	8 kg (± 0,2)	17,5 lbs	9 kg (± 0,2)	20 lbs	8 kg (± 0,2)	17,5 lbs	10 kg (± 0,2)	22 lbs	Board weight	10 kg (± 0,2)	22 lbs	10 kg (± 0,2)	22 lbs	10,5 kg (± 0,2)	23 lbs	10,5 kg (± 0,2)	23 lbs	13 kg (± 0,2)	28 lbs
Set weight	11 kg (± 0,2)	24 lbs	12 kg (± 0,2)	26,5 lbs	13 kg (± 0,2)	28,5 lbs	11 kg (± 0,2)	24 lbs	14 kg (± 0,2)	31 lbs	Set weight	14 kg (± 0,2)	31 lbs	14 kg (± 0,2)	31 lbs	14,5 kg (± 0,2)	32 lbs	11,5 kg (± 0,2)	25 lbs	14,5 kg (± 0,2)	32 lbs
Technology	DWF		DWF		DWF		LWF		WPLF		Technology	DC PLF		SH PLF		DC PLF		DC PLF reinforced		DC PLF reinforced	
N° Chambers	1		1		1		1		1		N° Chambers	2		1		2		2		2	
Fin Box	Mini Quick Fin Box		US Fin Box		US Fin Box		Mini Quick Fin Box (x2)		US Fin Box		Fin Box	US Fin Box		US Fin Box		US Fin Box		US Fin Box		US Fin Box (x2)	
Fin	Mini Quick 7"		US 8"		US 8"		Mini Quick 7" (x2)		US 9"		Fin	US 8"		US 9"		US 9"		US Quick 9"		US Quick 9" (x2)	
Valve	HP Valve		HP Valve		HP Valve		HP Valve		HP Valve		Valve	HP Valve (x2)		HP Valve		HP Valve (x2)		HP Valve (x2)		H P Valve (x2)	
The set includes	<ul style="list-style-type: none">• Element ISUP 8'2" (x1)• MOD3 Paddle (x1)• Mini Quick Skeg Fin 7" (x1)• Coiled Leash 10' (x1)• EXA 120l Backpack (x1)• Welter Pump (x1)• Repair Kit (x1)• User Manual (x1)		<ul style="list-style-type: none">• Element ISUP 9'2" (x1)• MOD3 Paddle (x1)• US Skeg Fin 8" (x1)• Coiled Leash 10' (x1)• EXA 120l Backpack (x1)• Welter Pump (x1)• Repair Kit (x1)• User Manual (x1)		<ul style="list-style-type: none">• Element ISUP 10'2" (x1)• MOD3 Paddle (x1)• US Skeg Fin 8" (x1)• Coiled Leash 10' (x1)• EXA 120l Backpack (x1)• Welter Pump (x1)• Repair Kit (x1)• User Manual (x1)		<ul style="list-style-type: none">• Travelight ISUP 9'2" (x1)• MOD5 Paddle (x1)• Mini Quick Skeg Fin 7" (x2)• Coiled Leash 10' (x1)• TERA 60l backpack (x1)• Feather Pump (x1)• Repair Kit (x1)• User Manual (x1)		<ul style="list-style-type: none">• Reef ISUP 10'2" (x1)• MOD3 Paddle (x1)• US Skeg Fin 9" (x1)• Coiled Leash 10' (x1)• EXA 120l Backpack (x1)• Welter Pump (x1)• Repair Kit (x1)• User Manual (x1)		The set includes	<ul style="list-style-type: none">• Fluid ISUP 10'2" (x1)• MOD3 Paddle (x1)• US Skeg Fin 8" (x1)• Coiled Leash 10' (x1)• EXA 120l Backpack (x1)• Welter Pump (x1)• Repair Kit (x1)• User Manual (x1)		<ul style="list-style-type: none">• Tigershark ISUP 10'2" (x1)• MOD3 Paddle (x1)• US Skeg Fin 9" (x1)• Coiled Leash 10' (x1)• EXA 120l Backpack (x1)• Welter Pump (x1)• Diver down Flag (x1)• Repair Kit (x1)• User Manual (x1)		<ul style="list-style-type: none">• Fury ISUP 12'2" (x1)• Carbon paddle (x1)• US Skeg Fin 9" (x1)• Coiled Leash 10' (x1)• EXA 120l Backpack (x1)• Welter Pump (x1)• Repair Kit (x1)• User Manual (x1)		<ul style="list-style-type: none">• Solid ISUP 10'6" (x1)• US Quick Skeg Fin 9" (x1)• Trailer Leash 8'(x1)		<ul style="list-style-type: none">• Solid ISUP 12'2" (x1)• US Quick Skeg Fin 9" (x2)• Trailer Leash 8' (x1)	
Features	All Round ISUP for all sea conditions and activities, suitable for beginners from 40-50 kg to intermediate 50-60 kg		All Round ISUP for all sea conditions and activities, suitable for beginners from 50-70 kg to intermediate 70-80 kg		All Round ISUP for all sea conditions and activities, suitable for beginners from 60-90 kg intermediate > 90 kg		Super compact and lightweight All Round ISUP, perfect for travel and for those who have space requirements.		ISUP with window to observe the seabed during paddling, stable and voluminous.		Features	All Round ISUP for all sea conditions and activities, made with double chamber for maximum rigidity and safety.		ISUP with integrated locker, and laces for carrying equipment, the ideal board for spearfishing and freediving.		Touring ISUP for long outings at sea, made with double chamber for maximum rigidity and safety.		All Round ISUP designed for rental activities, thanks to the reinforced construction it is safe, practical and robust.		Tandem ISUP for two people, designed for rental activities with reinforced construction for safety and strength.	



PADDLES

Lightness, strength and versatility: these are the key values our collection of paddles seeks to offer. Our designs are created to meet the specific needs of those who go stand-up paddleboarding and kayaking, with a focus on inflatable products and portability.

For this reason, the choice of materials is directed only towards those with high levels of corrosion resistance, lightness, and elasticity such as aluminum, nylon and carbon fiber.

Behind the apparent simplicity hides great attention to detail, aimed at improving performance and usability.

Highlights include: the one-hand height adjustment mechanism, the floating capacity and an easy assembly system.

Finally, modularity is what unites all our paddles, to ensure easy transport and storage within the sets they are supplied in.



MOD3 SUP PADDLE

Max Height	215 cm	84"
Min Height	165 cm	64"
Disassembled	89 cm	35"
Parts Number	3	
Composition	Aluminum + Nylon	
Blade sizes	47x18 cm	18"x7"

Sturdy and versatile telescopic SUP paddle in 3 modules, suitable for all levels of experience. Floating and adjustable with centering and height notches, one-hand locking system. Aluminum handle and stainless button springs, reinforced nylon blade and handle.



MOD5 SUP PADDLE

Max Height	218 cm	85"
Min Height	185 cm	72"
Disassembled	50 cm	19"
Parts Number	5	
Composition	Aluminum + Nylon	
Blade sizes	42x20 cm	16"x8"

Telescopic SUP paddle in 5 modules, designed for those who need to transport it in compact backpacks. Floating and adjustable with centering and height notches, one-hand locking system. Aluminum handle and stainless button springs, reinforced nylon blade and handle.



CARBON SUP PADDLE

Max Height	215 cm	84"
Min Height	165 cm	64"
Disassembled	90 cm	35"
Parts Number	3	
Composition	Carbon Fiber	
Blade sizes	48x18 cm	19"x7"

High-performance and lightweight SUP paddle, suitable for long sessions and distances. Floating and adjustable with centering and height notches, one-hand locking system. Carbon fiber handle and blade.



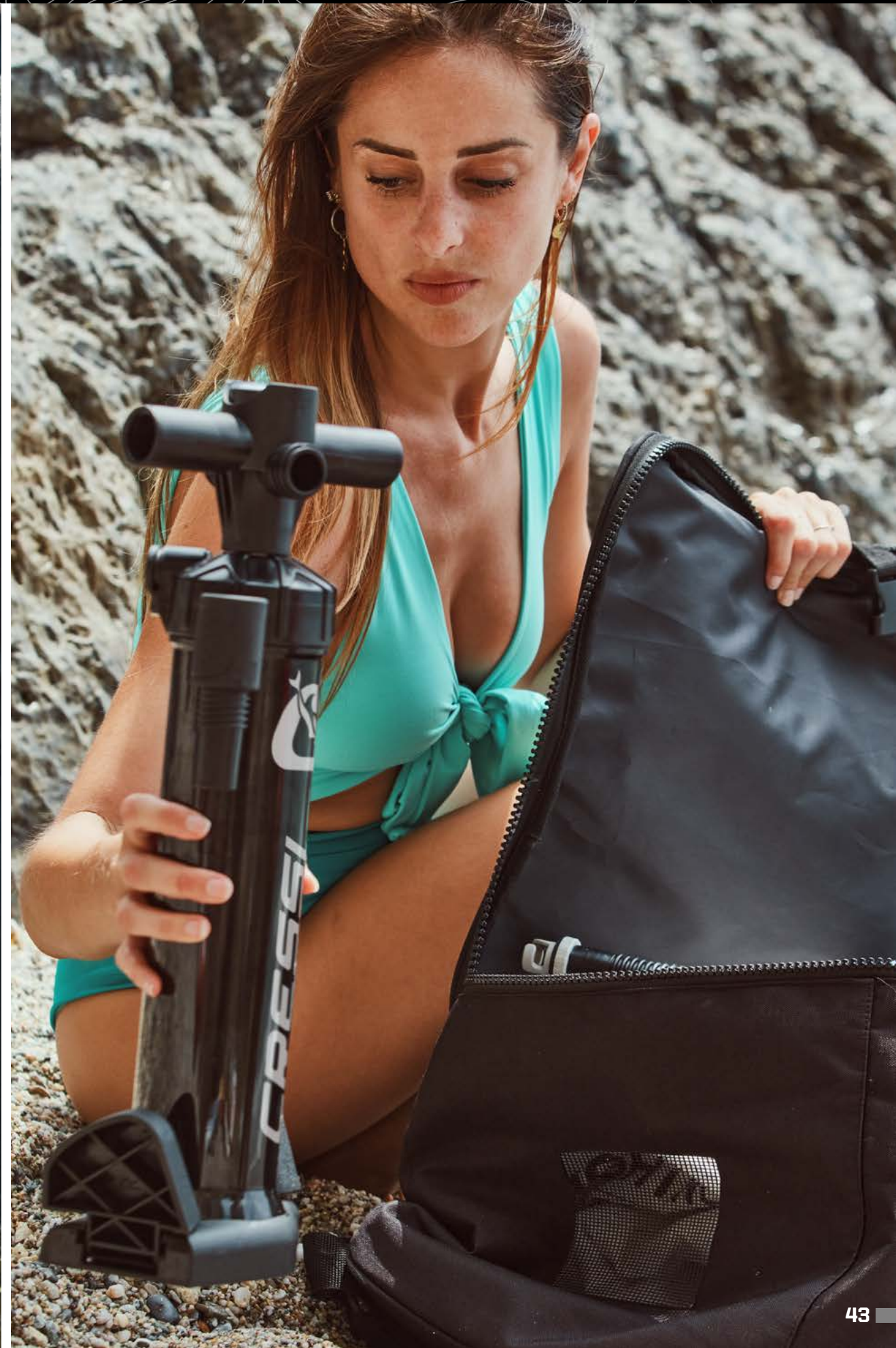
PRODUCT	CODE
MOD3 SUP PADDLE BLACK/BLUE	NM035020
MOD5 SUP PADDLE BLACK/BLUE	NM055020
CARBON SUP PADDLE BLACK	NM075050

ACCESSORIES

The quality is in the details, and the Cressi Hydrosports line hasn't neglected the importance of accessories for its SUPs and kayaks.

These consist of a selection of products conceived and designed for maximum functionality and reliability, specifically aiming for greater comfort and ease of use, interchangeability and replacement, agile transportation and modest size.

Included in the sets or available separately, the accessories let you fully enjoy stand-up paddleboarding by meeting all the relevant needs.





US SKEG FIN 8"

Maneuverability	●●●●○
Roll Stability	●●●○○
Draft	205 mm 8"
Composition	ABS
Fin Box	US Fin Box
Lock system	Threaded Pin

SUITABLE FOR:
Element All Round 9'2" ISUP
Element All Round 10'2" ISUP
Reef Window 10'2" ISUP
Fluid All Round 10'2" ISUP
Tiger Shark Multitask 10'2" ISUP
Fury Touring 12'2" ISUP
Solid All Round 10'6" ISUP
Solid Tandem 12'2" ISUP

SPARE PARTS:
US Skeg Fin Screw



US SKEG FIN 9"

Maneuverability	●●○○○
Roll Stability	●●●●●
Draft	178 mm 7"
Composition	Nylon
Fin Box	US Fin Box
Lock system	Threaded Pin

SUITABLE FOR:
Element All Round 9'2" ISUP
Element All Round 10'2" ISUP
Reef Window 10'2" ISUP
Fluid All Round 10'2" ISUP
Tiger Shark Multitask 10'2" ISUP
Fury Touring 12'2" ISUP
Solid All Round 10'6" ISUP
Solid Tandem 12'2" ISUP

SPARE PARTS:
US Skeg Fin Screw



US QUICK SKEG FIN 9"

Maneuverability	●●●○○
Roll Stability	●●●●○
Draft	230 mm 9"
Composition	Nylon + TPU (Pads)
Fin Box	US Fin Box
Lock system	Fixing Pads

SUITABLE FOR:
Element All Round 9'2" ISUP
Element All Round 10'2" ISUP
Reef Window 10'2" ISUP
Fluid All Round 10'2" ISUP
Tiger Shark Multitask 10'2" ISUP
Fury Touring 12'2" ISUP
Solid All Round 10'6" ISUP
Solid Tandem 12'2" ISUP

SPARE PARTS:
US Quick Skeg Fin Fixing Pads



MINI QUICK SKEG FIN 7"

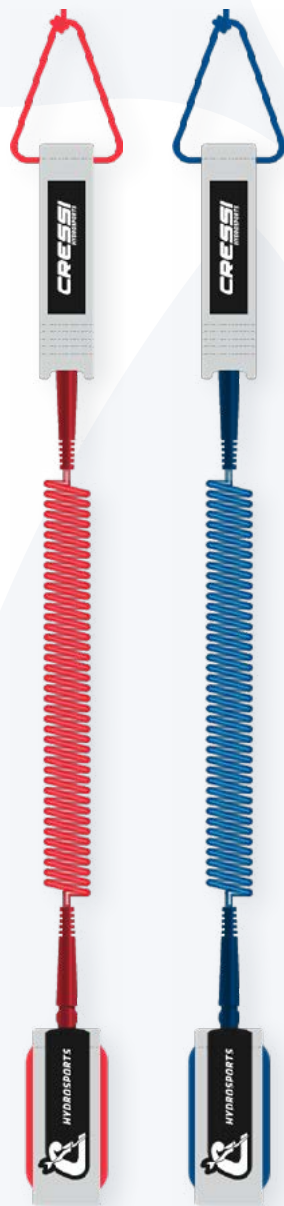
Maneuverability	●●●●●
Roll Stability	●●○○○
Draft	178 mm 7"
Composition	TPU
Fin Box	Mini Quick Fin Box
Lock system	Click

SUITABLE FOR:
Element Small All Round 8'2" ISUP
Travelight Foldable 9'2" ISUP



PRODUCT	CODE
US SKEG FIN BLACK 8"	NO000008
US SKEG FIN BLACK 9"	NO000009
US QUICK SKEG FIN BLACK 9"	NO000109
MINI QUICK SKEG FIN GREY 7"	NO000207
LOCK'N GO SKEG FIN BLACK 8"	NO000308

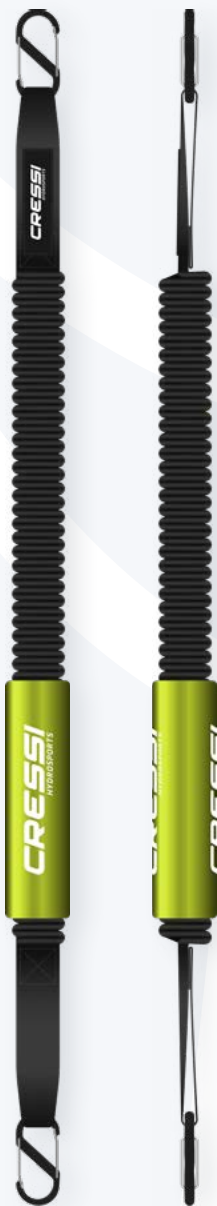




SUP COILED LEASH 10'

Length	305 cm	10"
Diameter	5,5 mm	

Extendable coil ankle leash (max 10') which won't get in the way while paddling. Sturdy TPU body and neoprene anklet with steel insert to withstand the greatest stresses. Maximum comfort and safety for stand-up paddleboarding.



TRAILER LEASH 8'

Length	260 cm	8'5"
--------	--------	------

Leash for towing and mooring SUPs. Elastic central body covered with a sturdy polyester belt. Its composition lets you tow while paddling, without experiencing sudden jerks. The S-shaped carabiner provides quick attachment/release on both sides.



SQUID FOLDABLE ANCHOR

Rope	10 m	32'
Weight	1,6 kg	3,5 lb

Foldable anchor designed for SUPs, kayaks and small inflatable boats. Squid's umbrella structure makes it easy to transport and store. Ideal for sandy, rocky and gravelly bottom conditions. Kit includes 10 meters of rope with float and hooking carabiner, padded case.



PRODUCT	CODE
SUP COILED LEASH GREY/RED 10'	NP001078
SUP COILED LEASH GREY/BLUE 10'	NP001072
TRAILER LEASH BLACK/FLUO 8'	NQ005095
SQUID FOLDABLE ANCHOR SET RED 3.5 LBS	NS000000



WELTER
HAND PUMP

Height	63 cm	2'6"
Volume	2000 cc	2x2 L
Weight	1 kg	2,2 lb
Max Press.	1.0 Bar	15 PSI
Action	Inflation and deflation	

Welter is the largest capacity Cressi Hydrosports pump. With a volume of 2000 cc, it can inflate a 300 l board in under 10 minutes. The mechanical selector can be used to set the pump to double or single action, to reduce fatigue when inflating at high pressures. Equipped with a deflation function, pressure gauge and multiple bayonet connections, it's compatible with all Cressi Hydrosports SUPs and kayaks. Its foldable pedestal and unscrewable handles make Welter compact and easy to store in a backpack.



PRODUCT	CODE
WELTER HIGH PRESSURE INFLATION HAND PUMP BLACK 2000 CC	NR000020
FEATHER HIGH PRESSURE INFLATION HAND PUMP BLACK 1100 CC	NR001011
BOLT HIGH PRESSURE INFLATION 12V DC PUMP BLACK	NR002012



FEATHER
HAND PUMP

Height	45 cm	1'5"
Volume	1100 cc	2x1,1 L
Weight	0,8 kg	1,8 lb
Max Press.	1.0 Bar	15 PSI
Action	Inflation and deflation	

Compact and lightweight, this 1100 cc pump is specially designed for anyone who needs a high-performance product to be transported in the smallest possible space. Equipped with inflation/deflation function and mechanical selector for double action (air injection by both pushing and pulling) or single action for high pressures. Equipped with folding pedestal, unscrewable handles, pressure gauge and multiple bayonet connections, it's compatible with all Cressi Hydrosports SUPs and kayaks.



BOLT 12V DC
ELECTRIC PUMP

Power	12V DC	
Elect. Current	15 A Max	
Weight	1,5 kg	3,3 lb
Max Press.	1,2 Bar	18 PSI
Action	Inflation	

The Bolt electric pump from Cressi Hydrosports allows optimal and fatigue-free inflation at high pressure. Simply select the desired pressure on the ring nut and activate the pump, which will automatically deactivate once the pressure is reached. The 12V connection and battery terminals make it ideal for car trips. Only compatible with the Cressi Hydrosports ISUP range.



BAGS AND BACKPACKS

From carrying your equipment ashore to activities on the water, Cressi Hydrosports bags and backpacks offer ideal solutions for every space and task requirement.

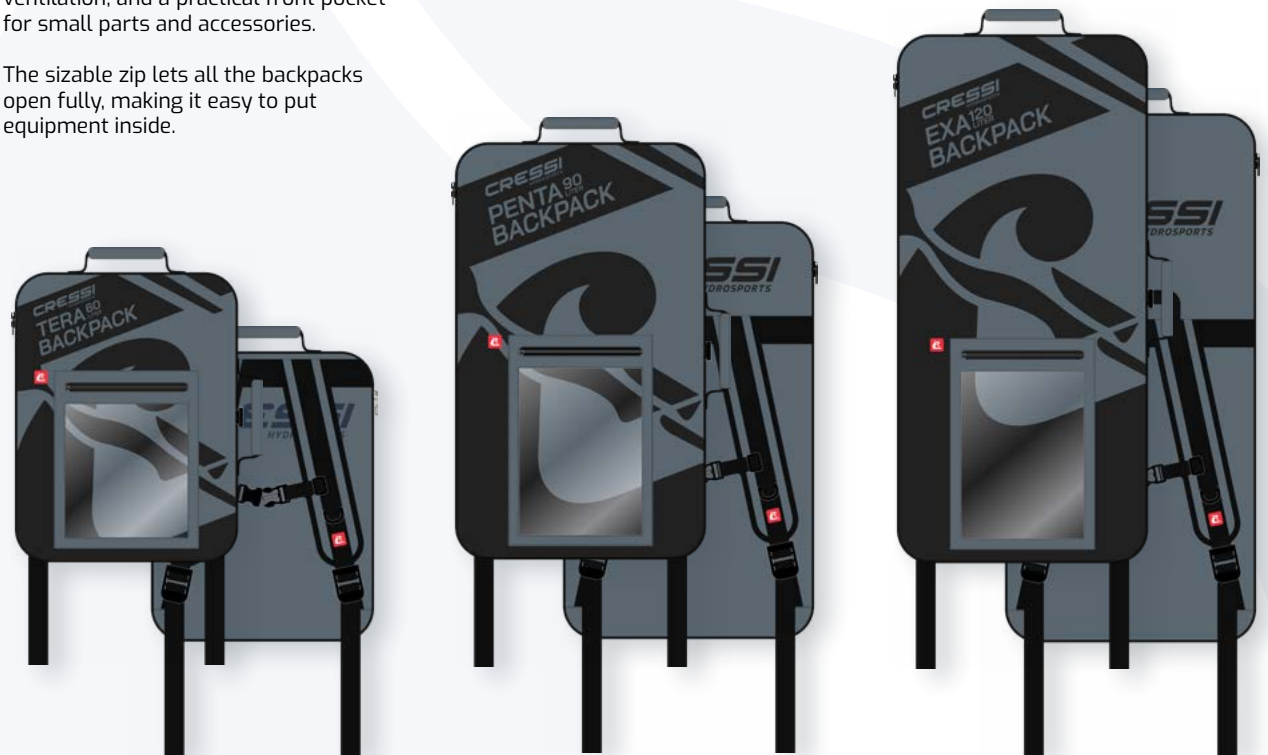


TRANSPORT BACKPACKS FOR ISUP AND IKAYAK

Cressi Hydrosports backpacks for carrying equipment are designed with only the best materials and components, to ensure strength and practicality.

Available in three different sizes to fit different sets, they feature adjustable shoulder straps with chest support straps, internal straps to secure and gather gear, a mesh bottom for ventilation, and a practical front pocket for small parts and accessories.

The sizable zip lets all the backpacks open fully, making it easy to put equipment inside.



TERA BACKPACK 60 L

Height	52 cm	21"
Width	40 cm	16"
Depth	27 m	11"



SUITABLE FOR:
Travelight Foldable 9'2" ISUP

PENTA BACKPACK 90 L

Height	75 cm	30"
Width	45 cm	18"
Depth	27 cm	11"



SUITABLE FOR:
Namaka IKAYAK 8'2" Single
Namaka IKAYAK 10'7" Double

EXA BACKPACK 120 L

Height	95 cm	38"
Width	45 cm	18"
Depth	27 cm	11"



SUITABLE FOR:
Element Small All Round 8'2" ISUP
Element All Round 9'2" ISUP
Element All Round 10'2" ISUP
Reef Window 10'2" ISUP
Fluid All Round 10'2" ISUP
Tiger Shark Multitask 10'2" ISUP
Fury Touring 12'2" ISUP
Solid All Round 10'6" ISUP
Solid Tandem 12'2" ISUP



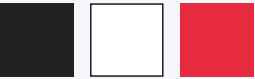
PRODUCT	CODE
TERA BACKPACK BLACK 60 L	NW016050
PENTA BACKAPCK BLACK 90 L	NW009050
EXA BACKPACK BLACK 120 L	NW001250

**SPIDY 25 L
DRY DECKPACK**

Spidy 25L Dry Deckpack came from the desire to create a waterproof backpack that can be comfortably carried on the board during sessions at sea. Spidy is a deckpack featuring adjustable straps with snap hooks, which can be hooked to the D-rings of each SUP in the collection.

The backpack is completely waterproof and can be opened and closed in two different ways: from above, thanks to the large pocket with strap for watertight closure, or from the base via the practical dry zip that surrounds the backpack's structure. The lower hinged opening is especially useful at sea, as it lets you easily access the inside of the deckpack without having to unroll the upper opening. The front part of the backpack has a handy elastic, while the side has a mesh pocket.

The back and the adjustable padded shoulder straps, combined with the adjustment strap for the chest, make Spidy a convenient, comfortable and roomy backpack, ideal for all water activities.



PRODUCT	CODE
SPIDY DRY DECKPACK BLACK 25 L	NW022550





US SKEG FIN BOX

SUITABLE FOR:
US Skeg Fin 8"
US Skeg Fin 9"
US Skeg Fin QUICK 9"

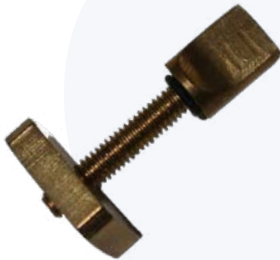
CODE
NZ000001



MINI QUICK SKEG FIN BOX

SUITABLE FOR:
MINI QUICK Skeg Fin 7"

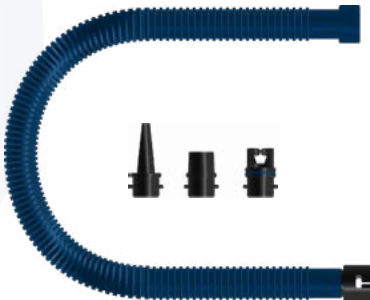
CODE
NZ000000



US SKEG FIN SCREW

SUITABLE FOR:
US Skeg Fin 8"
US Skeg Fin 9"

CODE
NZ000100



HAND PUMP HOSE + NOZZLES KIT

SUITABLE FOR:
WELTER 2000 CC Pump
FEATHER 1100 CC Pump

CODE
NZ000600



PRESSURE GAUGE 15PSI MANUAL PUMP

SUITABLE FOR:
WELTER 2000 CC Pump
FEATHER 1100 CC Pump

CODE
NZ000610



HP - HIGH PRESSURE VALVE

SUITABLE FOR:
All Cressi Hydrosports ISUP Boards

CODE
NZ000303



US QUICK SKEG FIN FIXING PADS

SUITABLE FOR:
US Skeg Fin QUICK 9"

DESCRIPTION:
Pads to adjust the intensity of friction and locking on the US QUICK 9 "fins. To have more friction, it will be necessary to use more pads.

CODE
NZ000200



DIVER DOWN FLAG FOR ISUP

SUITABLE FOR:
Tiger Shark Multitask 10'2" ISUP

CODE
NT611100



TIGERSHARK HATCH COVER TEAL

SUITABLE FOR:
Tiger Shark Multitask 10'2" ISUP

CODE
NZ003080



**BUNGEE CARGO ROPE
WHITE 3 M**

CODE
NZ000500



**REPAIR KIT PVC
PATCHES + VALVE
SCREW KEY**

The glue is not included in the kit

CODE
NY000000

**BRAND SUPPORT
CRESSI HYDROSPORTS**



FLOATING KEYCHAIN

CODE
NY000080



**RECTANGLE FLAG HYDROSPORTS
150X90cm**

CODE
NVABANHY01



**WING FLAG
60X240cm**

CODE
NVABANHY03



**BANNER FLAG HYDROSPORTS
350X60cm**

CODE
NVABANHY02





Need support?

Cressi products are supported by a worldwide branches network, they can provides support and warranty to customers. Visit cressi.com and ask for the closest branch to you.

**Cressi Italy
Headquarters**

Cressi Sub S.P.A.
Cressi Sub S.P.A.
Via G. Adamoli, 501
16165 Genova - Italy
Tel. +39 010 830 791

Cressi España

Cressi-Sub España S.A.
NIF: A60130978
C/Castellassa, 24 Nave 3,
Poligono Can Petit
08227 Terrassa Barcelona - Spain
Tel. +34 937 841 888

Cressi France

Cressi Sub France
Espace La Gaudé,
9565 Route De Saint Laurent
06610 La Gaudé - France
Tel. +33 049 329 0318

Cressi U.S.A.

Cressi Sub U.S.A.
3 Rosol Lane, Saddle Brook
NJ 07663 - USA
Phone: (800) 338 9143
Phone: (201) 594 1450

Cressi Mexico

Cressiwater S.A.P.I De C.V.
Central de Abastos, Carretera
Cancun-Aeropuerto km 17, Cancun
Quintana Roo, C.P.77565
Mexico, VAT NO.CRE161110812
Phone: +52 1 554 162-2052

Cressi Brasil

Cressi Brasil COM. MAT. ESP. LTDA
Avenida Padre Anchieta, 175 ,
Jordanópolis, São Bernardo do Campo
SP, 09891-420
CNPJ: 35.112.958/0001-59

Cressi South East Asia - Thailand

Cressi South East Asia Ltd
135/6-7 Moo 4
Patak Road, Tambon Rawai
Amphur Mueang, Phuket
Thailand 83130
Mobile: +66 (0) 643971234

Cressi China

Cressi China Watersports Products
Co.,Ltd
No.8 Nanhe Road, Kunshan City
Jiangsu province, China
Phone 86 0512 3668 0846#812

+

A project by Cressi Design Center
Photo by Studio Nicama

START EXPLORING

2K
21
COLLECTION**CRESSI**
HYDROSPORTS**Cressi Sub S.p.A.**

Headquarters
Via G. Adamoli, 501
16165 Genova
Italy

© Cressi Sub S.p.A.. All rights reserved. Reproduction, scanning, transmittal or storage, by any means, of the images in this catalog, whole or in part, is prohibited without the prior written permission of Cressi Sub S.p.A.

FOLLOW US:

📱 [cressi_hydrosports](https://www.instagram.com/cressi_hydrosports)
🌐 cressihydrosports.com

CRESSI
HYDROSPORTS